

COMPACT, COMPLETE, CONVENIENT

DOWNFLO® EVOLUTION PRE-ASSEMBLED SMALL



Donaldson®
FILTRATION SOLUTIONS



Smart Collector
Powered by iCue™ Technology



PRODUCTIVITY MEETS PRACTICALITY

Today's advanced manufacturing tools operate in faster-paced environments, which is great for helping you meet your production goals, but can add a lot of dust to your work environment.

The Downflo® Evolution Pre-assembled Small (DFPRE) series of collectors was designed as a packaged system to answer customer demand for a compact, convenient, and reliable filtration system that can help maximize production uptime. The result is a pair of easy-to-install dust collectors — DFPRE 2 and 3 — engineered to provide unmatched filtration performance and operational confidence.

Help protect your people and productivity — while keeping your operation moving at top speed — with effective and reliable dust management solutions that can deliver:



Environmental Health & Safety



Maximized Production Uptime



Economical Cost of Ownership



Packaged & Easy Installation

APPLICATIONS

Donaldson offers effective dust control solutions for your continuous manufacturing processes:

- + Metal Manufacturing
- + Chemical & Petroleum Products
- + Pharmaceutical
- + Metal Grinding
- + Plasma Cutting
- + Laser Cutting
- + Welding
- + Abrasive Blast
- + Plastic



INNOVATIONS IN DUST CONTROL

For more than 40 years, Donaldson has been at the forefront of cartridge filter collection. The company has developed game-changing dust control solutions that improve performance, convenience, and help lower your total cost of ownership.

These advancements have resulted in next-generation dust control systems, including the DFPRE series of collectors.

Smart Collector

Equipped with iCue™ Connected Filtration Technology, your Smart Collector monitors your equipment and provides operational insights through automated alerts and a dashboard that's accessible from your computer or smart device.

Spark Reducing Inlet

When used as part of an overall fire mitigation strategy, it reduces the risk of a spark entering the dust collector by directing the airstream through a tortuous path.*

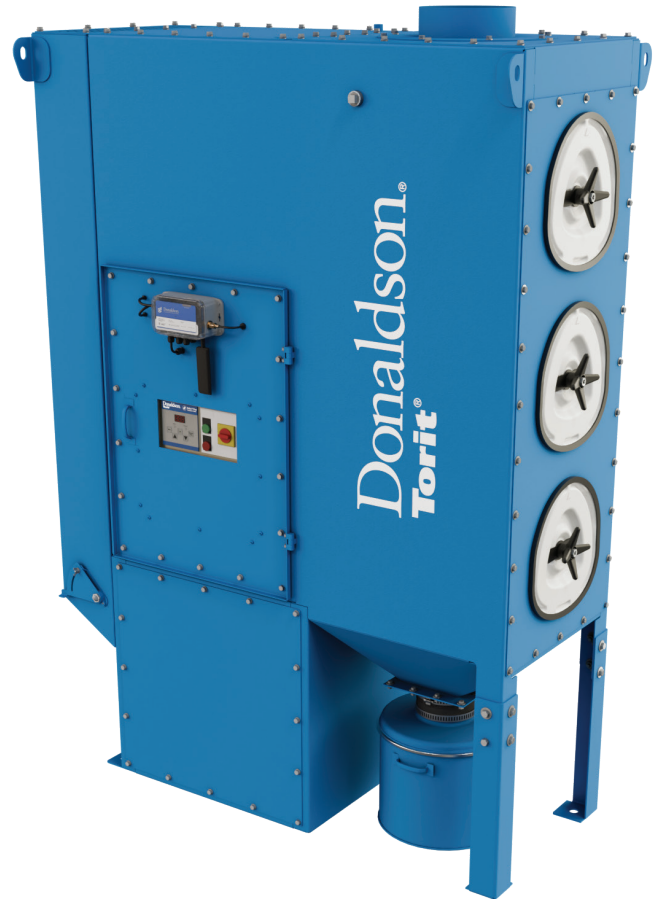
Sealed Drum Kit

Eliminates the need for a costly rotary airlock between the collector hopper and the drum for most combustible dust applications.

Flameless Vent

Allows dust collection equipment to be installed indoors as part of an overall combustible dust management strategy.

** Intended for use in applications with an increased fire risk and can be used as part of an overall fire mitigation strategy. No single spark mitigation device, including the Spark Reducing Inlet, can guarantee the elimination of all sparks and ignition sources from entering the dust collector. Please contact your Donaldson sales representative to discuss additional fire mitigation strategies as necessary.*

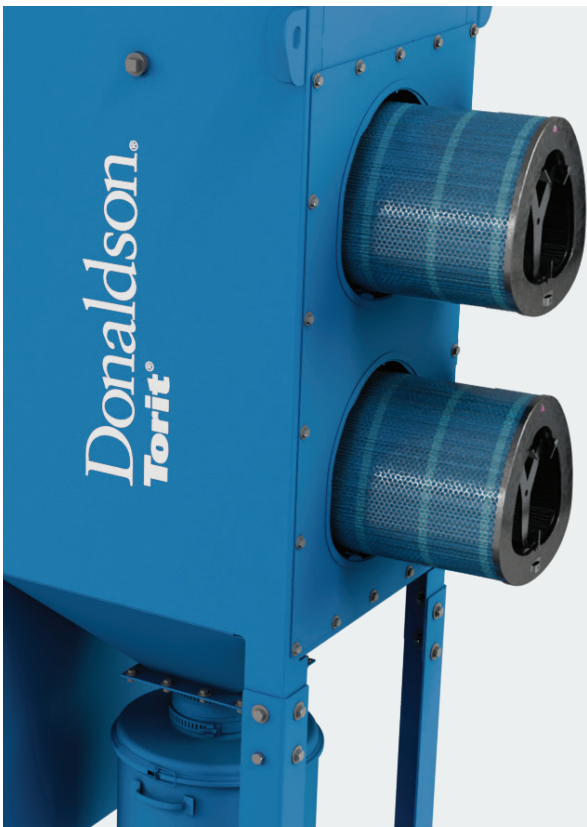


THE DFPRE IS PACKAGED TO PERFORM

With its small footprint, high-efficiency cartridge filters, and easy-to-connect ducting, the DFPRE 2 and 3 are effective solutions for organizations looking for maximum performance and production uptime from an industry leader.

Easy Installation

- + Ships pre-assembled for streamlined set-up
- + Pre-wired fan and controls
- + Includes protective junction box
- + Clamp-together Easy-Duct™ connections don't require special tools



Adaptability

Suitable for a wide range of applications with options including:

- + HEPA afterfilter to achieve higher filtration efficiency: 99.97% on 0.3-micron particles
- + Explosion protection to provide a complete and robust package for a variety of combustible dusts

Maximized Performance

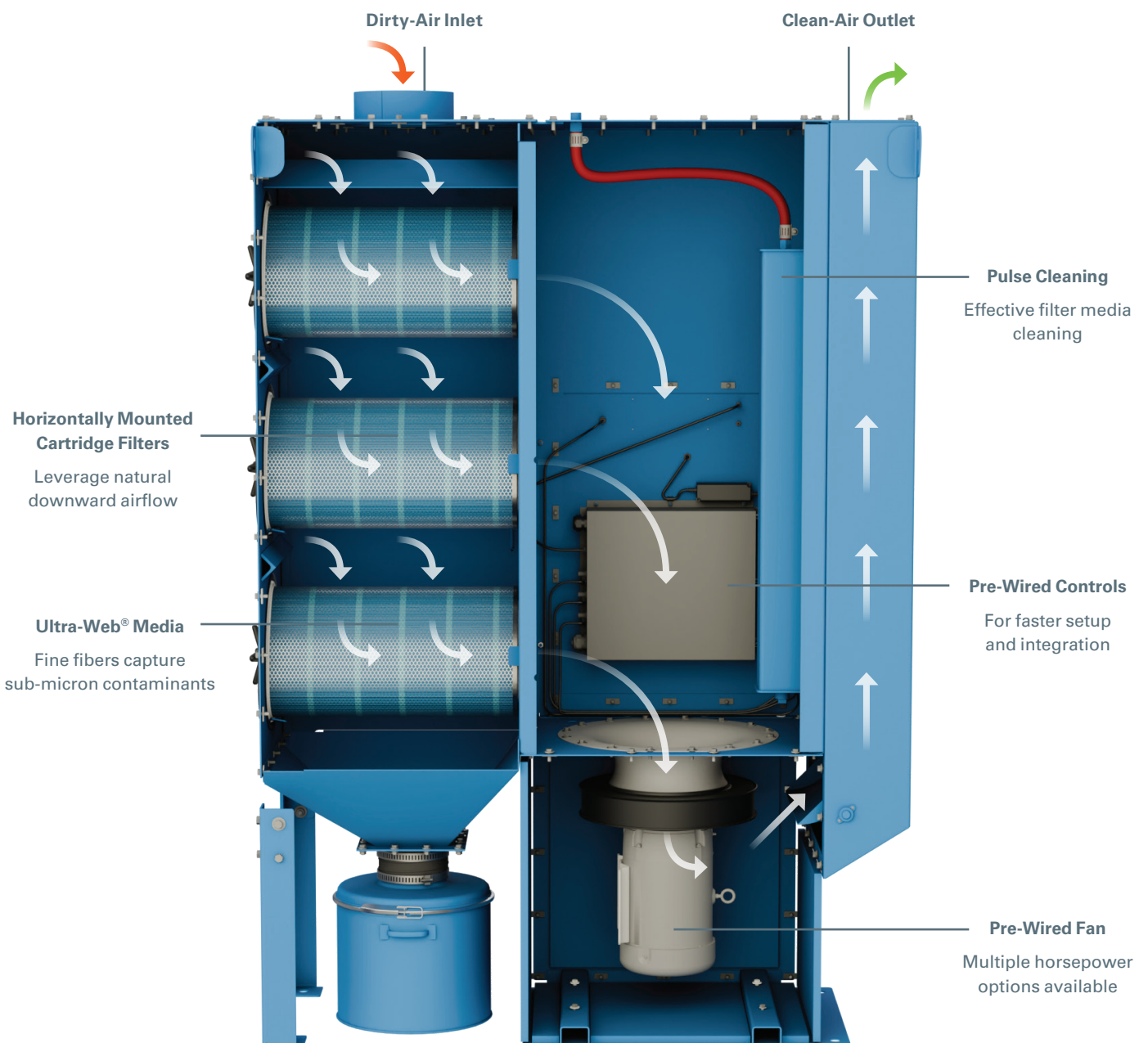
- + Advanced airflow design directs incoming air to the inlet dropout plate for reduced filter loading
- + Enhanced media surface area and pulse cleaning adds to filter life
- + Increased airflow per cartridge results in a lower cost per CFM

ENGINEERED TO EXCEL

The DFPRE 2 and 3 utilize natural downward airflow for increased filtration performance. By ducting the dirty air into the collector from above the filters, the downward airflow forces heavy particulate from the airstream into the hopper.

The collector's horizontally mounted filters make filter changeouts easier and even help limit exposure to dust during the process. The filter orientation also contributes to reduced compressed air usage since most of the heavy particulate has already found its way to the containment vessel.

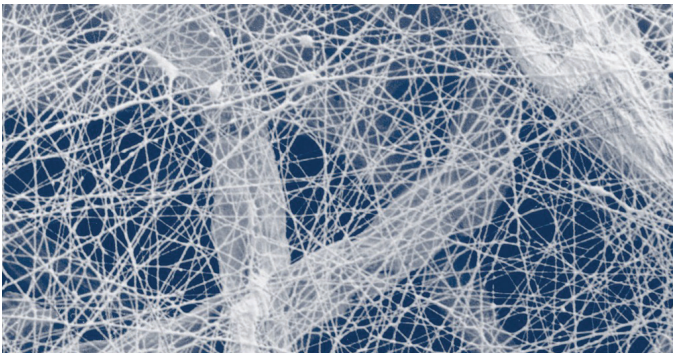
The unit's pre-wired fan and controls help take you from installation to operation faster, while the timely pulse cleaning adds to filter life and performance.



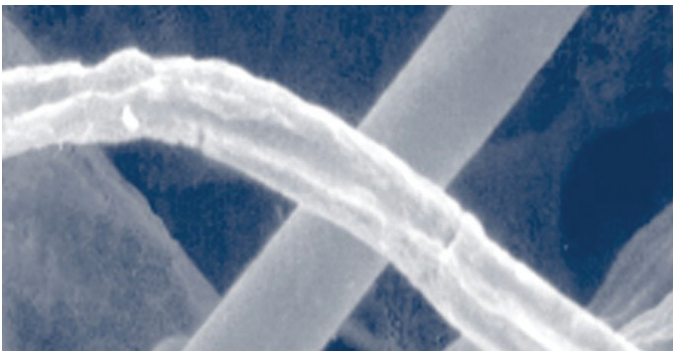
INDUSTRY-LEADING FILTRATION DESIGN

Our horizontally mounted triangular filters — made with industry-leading Ultra-Web® fine fiber technology — have more filter media at the bottom of the cartridge so pulse-cleaning energy directs the ejected dust toward its ultimate destination — the containment vessel.

Ultra-Web filtration technology features a layer of fine fibers (0.2 – 0.3 microns in diameter) on the surface of the media to capture sub-micron contaminants. This makes the dust cake come off easily during automated cleaning cycles, ensuring cleaner air longer.



Fine Fiber Media (600px) — Fine fiber surface loading technology is available in all Ultra-Web and Fibra-Web® filter cartridges.



Commodity Filter Media (600px) — Conventional media has spaces of up to 60 µm between fibers, allowing dust to become deeply embedded.

With its more efficient cartridge filters and advanced downward airflow, the DFPRE 2 and 3 require fewer filters for the same filtration power, resulting in:

- + Reduced filter replacement costs
- + Reduced maintenance
- + Reduced floor space requirements

Triangular filters are specifically designed for improved pulse cleaning, increased airflow per cartridge, and superior performance.

TRIANGULAR FILTER



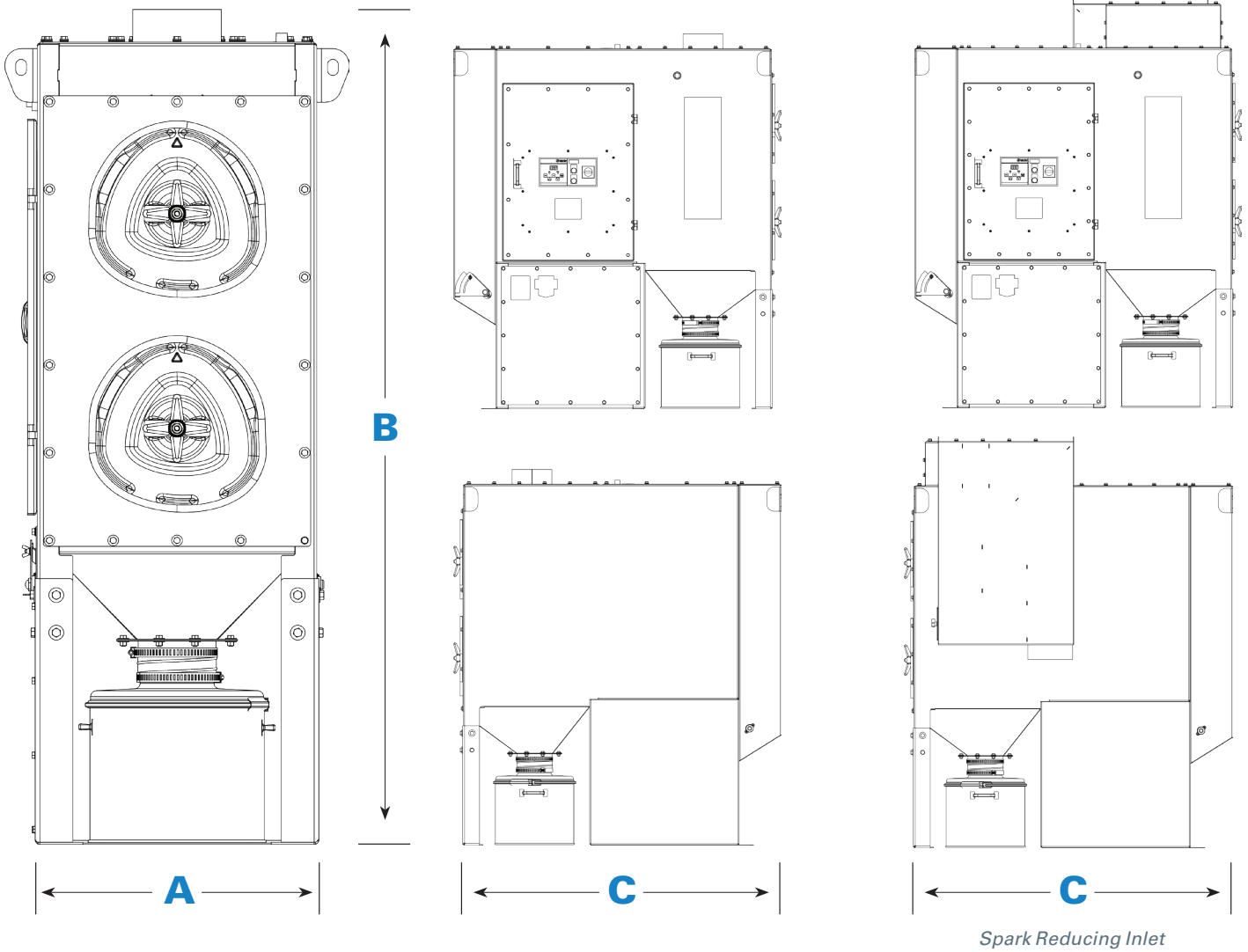
27% of Total Filter Media

ROUND FILTER



25% of Total Filter Media

DIMENSIONS FOR THE DFPRE 2

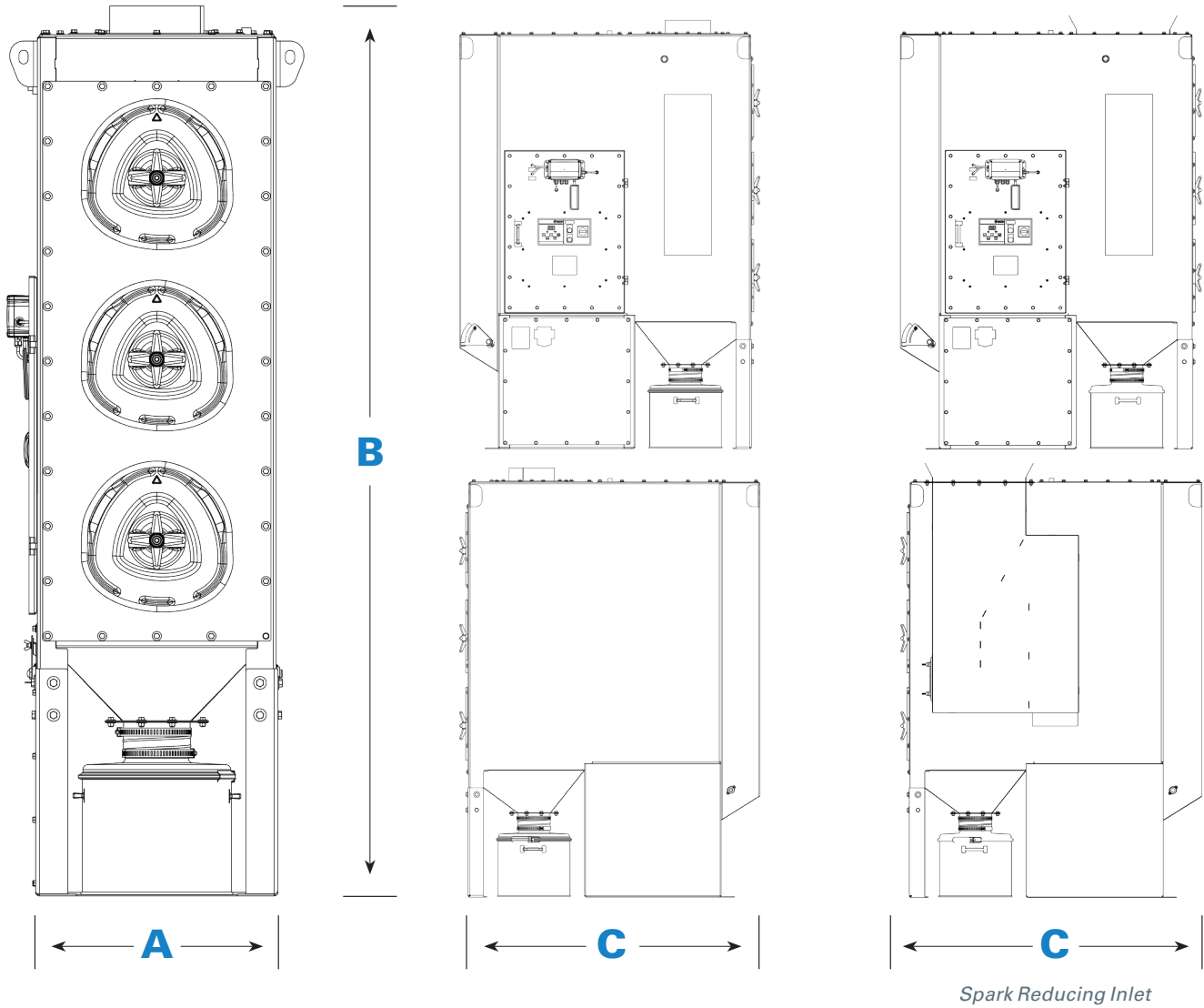


Model	Number of Filter Elements	Number of Valves	Dimensions (mm)*			Weight (kg)**
			Width A	Height B	Depth C	
DFPRE 2	2	2	32" (812.8)	78" (1,981.2)	68" (1,727.2)	1,009 lbs. (457.7)
DFPRE 2 with Flameless Vent	2	2	61" (1,549.4)	78" (1,981.2)	68" (1,727.2)	1,309 lbs. (593.7)
DFPRE 2 with Spark Reducing Inlet	2	2	41" (1,041.4)	85" (2,159)	68" (1,727.2)	1,180 lbs. (535.2)

* Dimensions & Weights depend on the options chosen.

** Weights include filter cartridges and are for collectors prior to first use, i.e., with no dust collected. Excludes shipped loose items.

DIMENSIONS FOR THE DFPRE 3



Spark Reducing Inlet

Model	Number of Filter Elements	Dimensions (mm)*			Weight (kg)**
		Width A	Height B	Depth C	
DFPRE 3	3	32" (812.8)	97" (2,463.8)	68" (1,727.2)	1,458 lbs. (661.3)
DFPRE 3 with Flameless Vent	3	63" (1,600.2)	97" (2,463.8)	68" (1,727.2)	1,936 lbs. (878.1)
DFPRE 3 with Spark Reducing Inlet	3	44" (1,117.6)	103" (2,616.2)	68" (1,727.2)	1,700 lbs. (771.1)

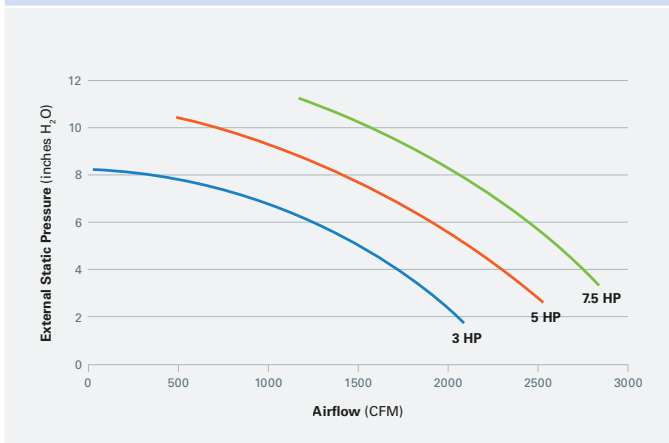
* Dimensions & Weights depend on the options chosen.

** Weights include filter cartridges and are for collectors prior to first use, i.e., with no dust collected. Excludes shipped loose items.

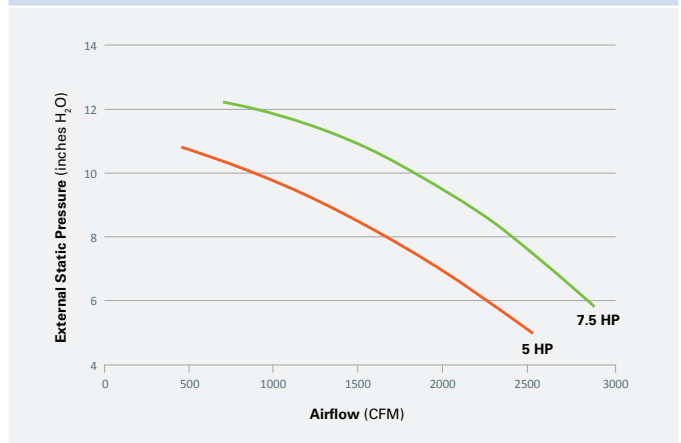
FAN OPTIONS FOR THE DFPRE 2 & 3



DFPRE 2



DFPRE 3



* Fan curve is based on a standard configuration. Spark Reducing Inlet or HEPA afterfilters will impact airflow. Actual airflow values may vary.

FEATURES & OPTIONS FOR THE DFPRE 2 & 3

Collector Features	DFPRE 2	DFPRE 3
Mild Steel Construction	Std	Std
Filter Cleaning System	Std	Std
Integral Power Pack	Std	Std
Quick Removal Access Covers	Std	Std
Hinged Access Covers	Opt	Opt
Integral Exhaust Silencer	Std	Std
8" or 10" Straight Edge Inlet	Std	Std
8" or 10" Easy-Duct Inlet	Opt	Opt
12" Easy-Duct or Straight Edge Inlet	–	Opt
Extraction Arm	Opt	Opt
3 HP Fan	Opt	–
5 HP Fan	Std	Opt
7.5 HP Fan	Opt	Std
Outlet Airflow Damper	Std	Std
HEPA Afterfilter	Opt	Opt
Spark Reducing Inlet	Opt	Opt
Explosion Vents	Opt	Opt
Flameless Explosion Vent	Opt	Opt
Sprinkler Taps	Std	Std
Sprinkler Packs	Opt	Opt
Ultra-Web® Fine Fiber Media	Std	Std
Other Media Options	Opt	Opt
Bag-Out Kit (Filter)	Opt	Opt
10-Year Warranty	Std	Std

Hopper Discharge	DFPRE 2	DFPRE 3
10 gal Dust Container	Std	Std
25 gal Dust Container	Opt	Opt
5 gal Sealed Drum Kit	Opt	–
15 gal Sealed Drum Kit	–	Opt

Paint System	DFPRE 2	DFPRE 3
Prime Coated Interior	Std	Std
Textured Multi-Coat Paint Finish	Std	Std
Custom Colors	Opt	Opt
Premium Duty Finish	Opt	Opt
Epoxy Coating	Opt	Opt

Electrical Controls, Gauges & Enclosures	DFPRE 2	DFPRE 3
Integrated Control Box with Delta P and Motor Starter	Std	Std
Remote Mounted Controls	Opt	Opt
Donaldson's iCue™ Connected Filtration Technology	Std	Std

Power Pack Fan Motors	DFPRE 2	DFPRE 3
Fan Horsepower	3 HP, 5 HP, 7.5 HP	5 HP & 7.5 HP
Decibel Level (Max dBA)	76-80 dBA depending on HP	76-80 dBA depending on HP

* Standard sound pressure levels were taken at an operator position of 1.5 m high and 1 m from the source.

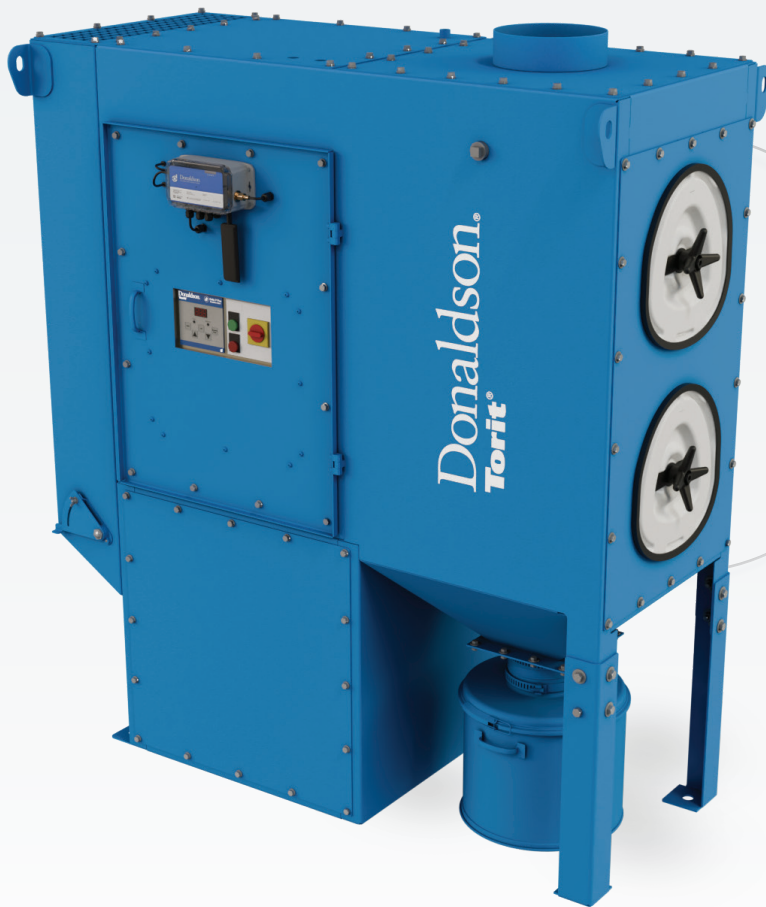
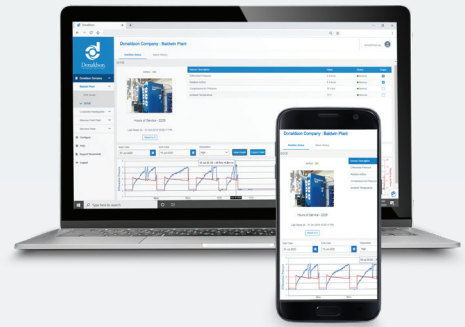
Std = Standard Feature; Opt = Optional Feature



SMART COLLECTOR. SMART CHOICE.

Choosing a Donaldson Smart Collector means choosing an industry-leading dust, fume, and mist collection solution for your operation and employees.

Smart Collectors come equipped with Donaldson's iCue™ Connected Filtration Technology. The system tracks your equipment, providing real-time data and analytics to help maximize uptime, increase maintenance efficiency, and manage your operation's critical compliance data. Our industry professionals, extensive product portfolio, and outstanding service and support can help ensure your Smart Collector will always be a Smart Choice.



UNPARALLELED
PERFORMANCE



INNOVATIVE FILTER
MEDIA TECHNOLOGY



INTELLIGENT
ENGINEERING



Smart Collector
Powered by iCue™ Technology



Donaldson.

Donaldson Company, Inc.
Minneapolis, MN

donaldson.com • shop.donaldson.com

North America
Email: donaldsontorit@donaldson.com
Phone: (USA) +1-800-365-1331

Latinoamerica
Email: industrialair@donaldson.com
Phone: +52-449-300-2442
Toll Free: (CO) (57) 601-580-1611
(CL) +800-914-544 • (PE) +800-712-10
(BR) +55 (11) 99707-6689

China
Email: info.cn@donaldson.com
Phone: +86-400-921-7956

Donaldson Europe B.V.
Email: IAF-europe@donaldson.com
Phone: +32-16-38-3811

India
Email: info.difs@donaldson.com
Phone: +91-124-4807-400 • +18001035018

Australasia
Email: marketing.australia@donaldson.com
Phone: +61-02-4350-2066
Toll Free: (AU) +1800-345-837
(NZ) +0800-743-387

Korea
Email: contactus.kr@donaldson.com
Phone: +82-2-517-3333

South Africa
Email: SAMarketing@donaldson.com
Phone: +27-11-997-6000

Southeast Asia
Email: IAF.SEA@donaldson.com
Phone: +65-6311-7373

Japan
Email: jp-ndl.ifsw@donaldson.com
Phone: +81-42-540-4114



IMPORTANT NOTICE: Many factors beyond the control of Donaldson can affect the use and performance of Donaldson products in a particular application, including the conditions under which the product is used. Since these factors are uniquely within the user's knowledge and control, it is essential the user evaluate the products to determine whether the product is fit for the particular purpose and suitable for the user's application. All products, product specifications, availability and data are subject to change without notice, and may vary by region or country.

F119558 ENG (08/2024) ©2024 Donaldson Company, Inc. All rights reserved. Donaldson Company, Inc. reserves the right to change or discontinue any model or specification at any time and without notice.