

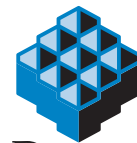


Donaldson
FILTRATION SOLUTIONS

TECHNICAL DATASHEET

PowerCore® Filter Pack

CP



PowerCore®
A Donaldson Filtration Technology

POWERCORE CP FILTER PACK

- Ultra-Web® Nanofiber filter media ensures longer filter life at reduced pressure drop.
- Surface filtration offers superior particle release during pulse cleaning.
- Fluted Construction packages more effective filter area in a smaller space.
- Smaller and lightweight filter pack design with built-in handles.
- Easy filter changeout for quick maintenance – no tools required.
- High filtration efficiency, BIA class M.

BREAKTHROUGH TECHNOLOGY UNFOLDS

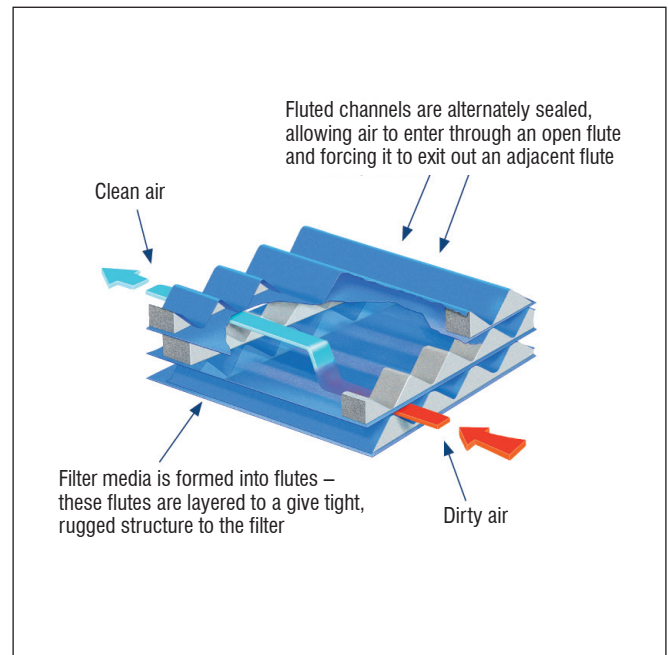
At the core is PowerCore® – the most innovative filtration technology from Donaldson. PowerCore® filter packs combine proprietary Ultra-Web® nanofiber technology with new media packaging expertise, creating a revolutionary filtration technology unlike anything else in the industrial filtration market.

ULTRA-WEB® NANOFIBER TECHNOLOGY

Proven and proprietary Ultra-Web® filter media delivers longer filter life, cleaner air and greater cost savings than other traditional filter media. It is made with an electrospinning process that produces a very fine, continuous, resilient fiber layer of 0.2 - 0.3 microns in diameter.

PowerCore® CP filter packs with Ultra-Web® media keep dust on the surface of the fluted channels where it is easily cleaned off unlike conventional depth loaded filter media.

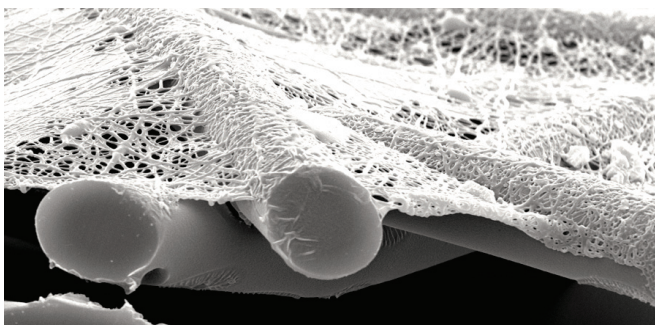
- Surface loading promotes efficient filter cleaning and longer life
- Improved pulse cleaning lowers operational pressure drop and energy use



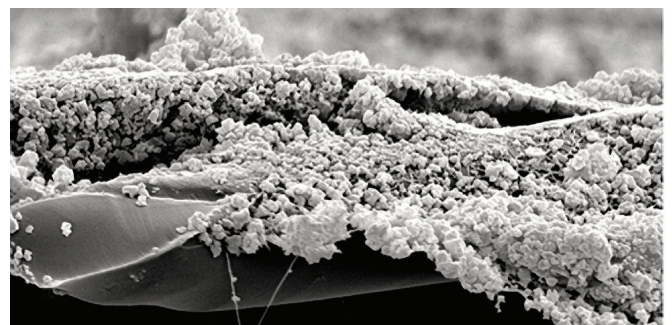
APPLICATIONS

- Fibrous dust
- Fluffy dust
- Agglomerative dust
- Spunbond version has excellent moisture and chemical resistance

SEM IMAGES



Clean Ultra-Web Media



Surface-Loaded Ultra-Web Media
(substrate still clean)

MEDIA AND FILTER PACK SPECIFICATION

MEDIA COMPOSITION

Nanofiber Surface Technology	Durable proprietary synthetic fiber Mean fiber diameter of 0.2 - 0.3 μm
Substrate	<ul style="list-style-type: none"> ■ Proprietary blend of cellulose fibers ■ Spunbond Polyester ■ Antistatic version per DIN 54345 Resistance less than 10^8 Ohms

MEDIA COMPATIBILITY DATA

Temperature Resistance	-40°C +65°C	
Moisture Absorption for cellulose fibers for spunbond polyester	Max. 14% at 21°C and 65% RH 0.2 - 0.5% at 21°C and 65% RH	
Chemical Tolerance	for cellulose fibers	for spunbond polyester
Acids	Poor	Good
Bases	Fair	Good
Oxidants	Poor	Good
Solvents	Fair	Good
Abrasion Resistance	Excellent	

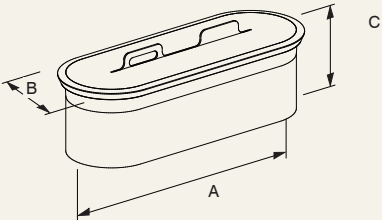
MEDIA EFFICIENCY

European Efficiency Rating	BIA class 'M' DIN 60335-2-69 Max. penetration <0.01%, 0.2 - 2.0 μm
US Efficiency Rating	MERV 13 per ASHRAE 52.2-2007

FILTER PACK CONSTRUCTION

Standard Construction	Obround design Fluted media configuration Urethane gasket Built-in handle
-----------------------	--

CURRENT AVAILABLE CONFIGURATION

CP		<p>A = 568 mm B = 192 mm C = 178 mm</p>
----	---	---

MOISTURE AND CHEMICAL TOLERANCE

Environmental conditions involving combinations of high temperature, chemicals and moisture can alter fiber resistance, resulting in a reduction of media strength which may compromise filter integrity and performance.

BIA RATING

BIA class M classification of the filter media has been determined by an independent laboratory according to DIN 60335-2-6:2008.

Fine quartz dust, with approximately 90% of particles in the range 0.2 - 2.0 µm, is fed onto the filter media at a specified airflow and concentration. The degree of penetration measured determines the classification of the media.

In the case of dust class M, the maximum allowable penetration is < 0.10%.

MINIMUM EFFICIENCY REPORTING VALUE (MERV)

The Minimum Efficiency Reporting Value (MERV) of this filter has been determined through independent laboratory testing using ASHREA 52.2 (2007) test standards. The MERV rating was determined at a face velocity of 118 feet per minute and loading up to four inches water gauge. Actual efficiency of any filter will vary according to the specific application parameters. Dust concentration, airflow, particle characteristics and pulse cleaning methods all affect filtration efficiency.

Research Park Building No. 1303
Interleuvenlaan 1
B-3001 Leuven (Heverlee)
Belgium
Tel +32 (0)16 383 970
Fax +32 (0)16 383 938
Email: IAF-europe@donaldson.com

www.donaldson.com

All rights reserved. Information in the document is subject to change without notice.
Donaldson Torit, Torit Powercore, Ultra-Web, and the colour blue are registered trademarks of Donaldson Company, Inc.
Contains Donaldson proprietary technology.

Donaldson[®]
Torit[®]