



**HD**

**HIGH PRESSURE FILTER HOUSINGS**

Process Filtration

**High pressure filter housings designed for the purification of compressed air and gases.**

Donaldson® HD high pressure filter housings are designed for the purification of compressed air and gases in industrial operations. The housings offer low differential pressure at high flow rates. A wide variety of filter elements are available to meet a broad range of application requirements.

HD housings are available in eight different sizes, ranging from 6 mm to 51 mm (1/4" to 2") FNPT, and pressure rating 63.8 bar (925 psig) and 400.2 bar (5,800 psig). The HD high pressure filter housings are designed in accordance to ASME VIII, Division 1. Housings are available in aluminum, stainless steel, and carbon steel.



**HD**

## SPECIFICATIONS

### MATERIALS

Filter Housing	63.8 bar (925 psig): Aluminum (304 SS optional) 400.2 bar (5,800 psig): Carbon steel (316 SS optional)
Sealing	Buna

### SURFACE FINISH

44.8 to 63.8 bar (650 to 925 psig): Aluminum anodized
248.4 to 400.2 bar (3,600 to 5,800 psig): Carbon steel nickel plated

### CONNECTION

6 mm to 51 mm (1/4" to 2") FNPT

### MINIMUM/MAXIMUM OPERATING TEMPERATURE

-10° C/+80° C (+14° F/+176° F)

### CAPACITY CORRECTION FACTORS - 63.8 BAR (925 PSIG)

Operating Pressure (bar)	34.5	38.0	41.4	44.9	48.3	51.8	55.2	58.7	62.1	63.8
Operating Pressure (psig)	500	550	600	650	700	750	800	850	900	925
Correction Factor	0.55	0.6	0.65	0.71	0.76	0.81	0.87	0.92	0.97	1.00

### CAPACITY CORRECTION FACTORS - 400.2 BAR (5,800 PSIG)

Operating Pressure (bar)	69.0	103.5	138.0	172.5	207.0	241.5	276.0	310.5	345.0	400.2
Operating Pressure (psig)	1000	1500	2000	2500	3000	3500	4000	4500	5000	5800
Correction Factor	0.17	0.26	0.35	0.43	0.52	0.6	0.69	0.78	0.86	1.00

1 Capacities are general recommendations and may vary based on element selection, operating conditions, and allowable pressure losses. To determine capacity at other operating pressures, multiply published capacity value by the correction factor

**400.2 BAR (5,800 PSIG) CARBON STEEL**

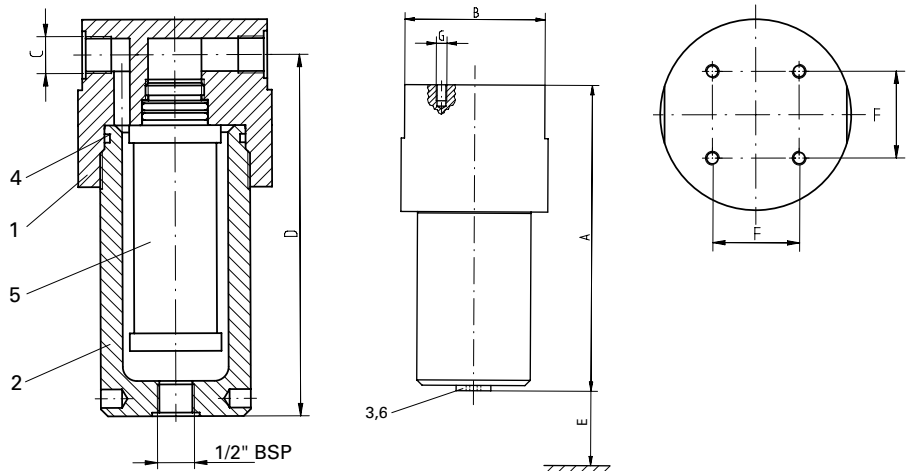
Model Number	Capacity		Element Size	Dimensions										Weight w/o Element		Item Number
				Height A		Width B		Conn. C (FNPT)		Conn. Height D		Clearance E				
	m <sup>3</sup> /hr	scfm		mm	in.	mm	in.	mm	in.	mm	in.	mm	in.	kg	lbs	
HD0003	1529	900	0305	170	6.7	89	3.5	6	1/4	150	5.9	130	5.1	5.0	11.0	1C052550-63
HD0006	3058	1,800	0310	170	6.7	89	3.5	10	3/8	150	5.9	130	5.1	5.2	11.5	1C052551-63
HD0012	6116	3,600	0420	211	8.3	107	4.2	13	1/2	191	7.5	191	7.5	9.0	19.9	1C052553-63
HD0018	9175	5,400	0520	236	9.3	107	4.2	19	3/4	216	8.5	191	7.5	9.5	20.9	1C052554-63
HD0027	13762	8,100	0525	254	10.0	119	4.7	25	1	221	8.7	191	7.5	14.5	32.0	1C052555-63
HD0036	18349	10,800	0725	305	12.0	119	4.7	32	1-1/4	272	10.7	254	10.0	16.0	35.3	1C052556-63
HD0048	24466	14,400	0730	330	13.0	152	6.0	38	1-1/2	297	11.7	254	10.0	27.5	60.6	1C052557
HD0072	36698	21,600	1030	422	16.6	191	7.5	51	2	381	15.0	343	13.5	60.0	132.3	1C052558-63

**DIMENSIONS**

**63.8 BAR (925 PSIG) ALUMINUM**

Model Number	Capacity		Element Size	Dimensions (inches)										Weight w/o Element		Item Number
				Height A		Width B		C (FNPT)		Conn. Height D		Clearance E				
	m <sup>3</sup> /hr	scfm		mm	in.	mm	in.	mm	in.	mm	in.	mm	in.	kg	lbs	
HD0003	245	144	0305	165	6.5	89	3.5	6	1/4	145	5.7	130	5.1	1.6	3.5	1C052250-63
HD0006	489	288	0310	165	6.5	89	3.5	10	3/8	145	5.7	130	5.1	1.6	3.5	1C052251-63
HD0012	979	576	0420	206	8.1	107	4.2	13	1/2	185	7.3	191	7.5	2.6	5.7	1C052263-63
HD0018	1468	864	0520	231	9.1	107	4.2	19	3/4	206	8.1	191	7.5	2.8	6.2	1C052264-63
HD0027	2202	1,296	0525	236	9.3	119	4.7	25	1	211	8.3	191	7.5	4.3	9.5	1C052265-63
HD0036	2936	1,728	0725	292	11.5	119	4.7	32	1-1/4	257	10.1	254	10.0	4.6	10.1	1C052266-63
HD0048	3914	2,304	0730	315	12.4	152	6.0	38	1-1/2	279	11.0	254	10.0	7.4	16.3	1C052267-63
HD0072	5872	3,456	1030	406	16.0	185	7.3	51	2	366	14.4	356	14.0	18.9	41.7	1C052268-63

NO.	DESCRIPTION
1	Upper housing bowl
2	Lower housing bowl
3	Screw plug
4	Housing O-Ring
5	Filter Element
6	Sealing



**Important Notice:** Many factors beyond the control of Donaldson can affect the use and performance of Donaldson products in a particular application, including the conditions under which the product is used. Since these factors are uniquely within the user's knowledge and control, it is essential the user evaluate the products to determine whether the product is fit for the particular purpose and suitable for the user's application. All products, specifications, availability and data are subject to change without notice, and may vary by region or country.



Donaldson Company, Inc.  
Minneapolis, MN  
**donaldson.com**  
**shop.donaldson.com**

**Australasia** 61-02-4350-2066  
marketing.australia@donaldson.com

**Brazil** 55-11-4894-6035  
vendas.brasil@donaldson.com

**China** 86-400-921-7032  
info.cn@donaldson.com

**EMEA** 49-2129-569-0  
cap-europe@donaldson.com

**India** 91-124-4807-400  
indiaenquiries@donaldson.com

**Japan** 81-42-540-4123  
ndl-ultrafilter-web@donaldson.com

**Korea** 82-2-517-3333  
cap-kr@donaldson.com

**Latin America** 52-449-300-2442  
industrialair@donaldson.com

**North America** 800-543-3634  
processfilters@donaldson.com

**South Africa** 27-11-997-6000  
samarketing@donaldson.com

**Southeast Asia** 65-6311-7373  
sea.salesenquiry@donaldson.com